



Diamond Slicer



Perfect for cutting

- Murrinis
 - Glass Rods
 - Bottles

This new Gryphon Diamond Slicer is designed to make clean, straight cuts in glass rods, bottles or similar material. It's perfect for making murrinis. A special, extra-thin 6-inch diamond blade cuts quickly and smoothly. An available fixture holds rods and feeds them through the blade so your cuts are always straight and parallel.

Slicer Specifications

Motor

1/4 hp Direct Drive AC
Variable speed

Blade Speed

800-3400 RPM

Platform size

15 inches by 9 inches

Coolant System

Automatic recirculation

Coolant Reservoir

12.5 inches by 6.5 inches

Included accessories

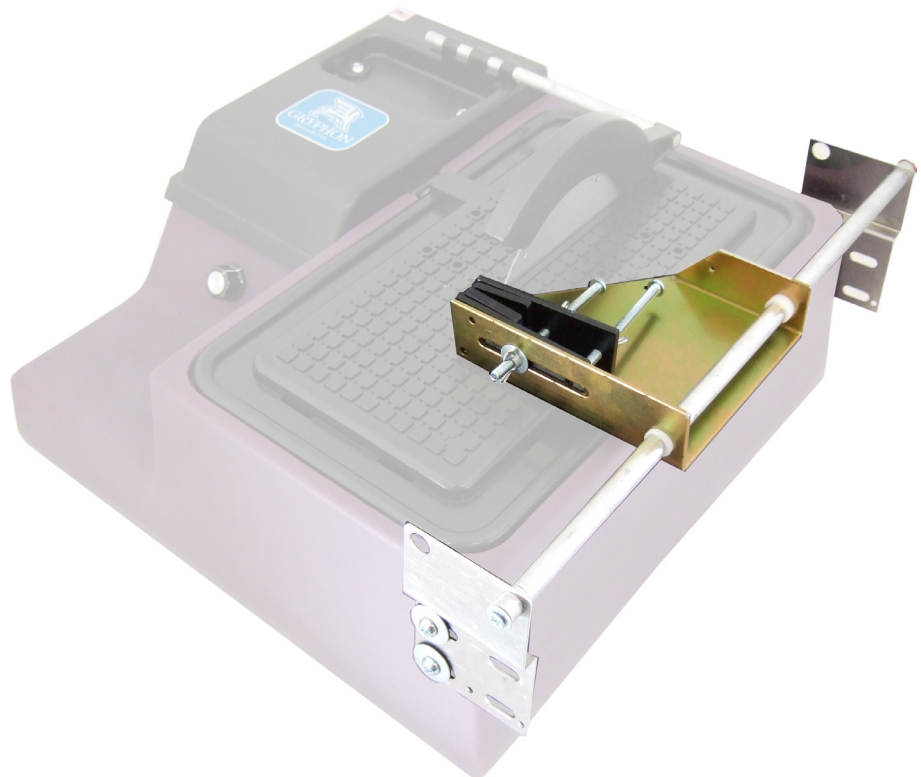
.025 inch blade
.012 inch blade
Splash Guard
Adjustable Fence

Blade Dimensions

6 inches in diameter
5/8 inch arbor

Warranty

One year

Made in USA

Available Slicing Fixture for guiding your work through the blade. A built-in clamp holds your work securely, and the rail insures that the cut is straight.



Adjustable Fence included with the Slicer



Gryphon Corporation

12417 Foothill Blvd.

Sylmar, CA 91342

(818) 890-7770 (818) 890-7775 fax